



**Amarillo
Gear
Company
LLC**

Post Office Box 1789
Amarillo, Texas 79105
2401 Sundown Lane (79118)
Ph. 806 622 1273
Fax 806 622 3258

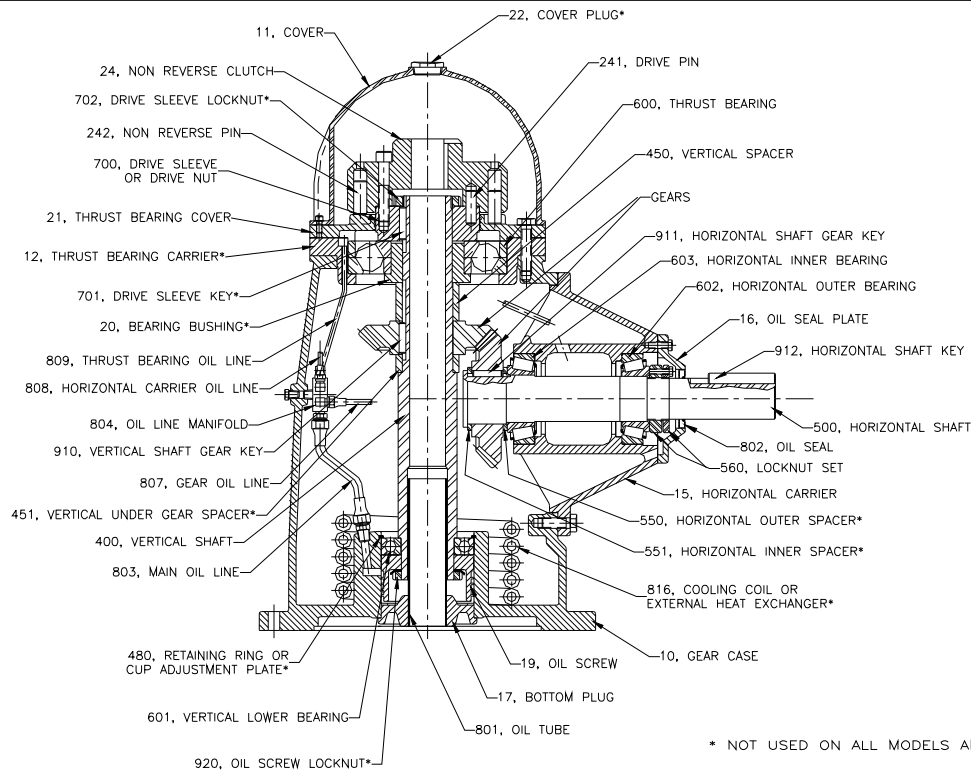
Instructions for Using Current Production Parts List for Small Pump Drives

1. These parts lists are for current production models from the model 20 to the model 350.
Contact Amarillo Gear Company for prices.
2. To make sure you get the correct parts, always provide the serial number of the gear drive when ordering parts.
3. General drawing for pump drives and combination assemblies are provided for parts identification.



A member of The Marmon Group of companies

Copyright ©2003 Amarillo Gear Co.



* NOT USED ON ALL MODELS AND RATIOS

DR.BY: R. ADAMS
 CK.BY:
 APP.BY:

**AMARILLO
 GEAR
 COMPANY**

TYPICAL
 CROSS
 SECTION

| | |
|----------|---------|
| MODEL: | 20-350 |
| DATE: | 11/4/02 |
| PART NO. | |
| DWG NO. | A5019 |



| Model 20 and 30 Parts List | | | | |
|--|-----------------|-----------------|-----------------|---|
| STANDARD DRIVE, TYPE S OR SL, FIGURE 1 ROTATION | | | | |
| Ref. No. | Model 20 | Model 30 | Part No. | Description |
| 10 | X | X | S10C | Gear Case |
| 11 | X | X | S11S | Cover |
| 12 | X | X | | Not available on this model |
| 15 | X | X | S15T | Horizontal Carrier |
| 15 | X | X | S15TS | Short Horizontal Carrier, 4:3 & 3:2 Ratios |
| 16 | X | X | S16T | Oil Seal Plate |
| 17 | X | X | S17FW | Bottom Plug With Oil Tube |
| | X | X | S18 | Inspection Plate (Not Shown) |
| 19 | X | X | S19F | Oil Screw |
| 20 | | X | 1331 | Bearing Bushing, Light Thrust |
| 21 | X | X | S21RD | Thrust Bearing Cover |
| 22 | X | X | | Not available on this model |
| 24 | X | X | S24R | Non Reverse Clutch |
| 241 | X | X | | Drive Pins, Set of 2 |
| 242 | X | X | NR 20 | Non Reverse Pins, Set of 4 |
| 400 | X | X | | Vertical Shaft, Standard & Light Thrust, Drive Sleeve |
| 400 | X | X | | Vertical Shaft, Standard & Light Thrust, Drive Nut |
| 450 | X | X | | Vertical Spacer |
| 451 | X | X | | Vertical Under Gear Spacer |
| 480 | X | X | 3000-312 | Retaining Ring |
| 500 | X | X | | Horizontal Shaft 1:1, 6:5, & Increasing Ratios |
| 500 | X | X | | Horizontal Shaft, 3:2 & 4:3 Ratios |
| 550 | X | X | | Horizontal Outer Spacer |
| 551 | X | X | | Horizontal Inner Spacer |
| 560 | X | X | 1231 | Locknut Set |
| 600 | X | X | 7407BG | Thrust Bearing |
| 600 | X | | 6407 | Thrust Bearing , Light Thrust |
| 600 | | X | QJ309 | Thrust Bearing , Light Thrust |
| 601 | X | X | 6208 | Vertical Lower Bearing |
| 602 | X | X | 25821/77 | Horizontal Outer Bearing |
| 603 | X | X | 25821/77 | Horizontal Inner Bearing |
| 700 | X | X | 1168 | Drive Nut, Obsolete |
| 700 | X | X | 1358 | Drive Sleeve, Current Design |
| 701 | X | X | | Not available on this model |
| 702 | X | X | | Not available on this model |
| 801 | X | X | 1237 | Oil Tube (Order with Bottom Plug) |
| 802 | X | X | 12456 | Oil Seal |
| 803 | X | X | | Main Oil Line |
| 804 | X | X | S 25 | Oil Line Manifold |
| 804 | X | X | E25W | Oil Line Manifold with Fittings |
| 807 | X | X | | Gear Oil Line |
| 808 | X | X | | Horizontal Carrier Oil Line |
| 809 | X | X | | Thrust Bearing Oil Line |
| 816 | X | X | | Not available on this model |
| 825 | X | X | G 20 | Set of Gear Case Gaskets (below S/N 231989) |
| | X | X | 51531 | Loctite Gasket Sealant 50ml tube (S/N 231989 & above) |
| 910 | X | X | MK1 | Vertical Shaft Gear Key |
| 911 | X | X | MK1 | Horizontal Shaft Gear Key |
| 912 | X | X | MK2 | Horizontal Shaft Key |
| 920 | X | X | | Not available on this model |

MINIMUM ORDER VALUE - \$100.00 NET.

SOME PART NUMBERS DETERMINED BY RATIO AND/OR OPTIONAL FEATURES. ALWAYS PROVIDE SERIAL NUMBER OF DRIVE WHEN ORDERING PARTS FOR VERIFICATION.



| Model 40 Parts List | | |
|--|-----------------|---|
| STANDARD DRIVE, TYPE S OR SL, FIGURE 1 ROTATION | | |
| Ref. No. | Part No. | Description |
| 10 | J10F | Gear Case, 12" BD |
| 10 | J10FX | Gear Case, 16-1/2" BD |
| 11 | J11A | Cover |
| 12 | J12B1 | Thrust Bearing Carrier |
| 15 | J15D | Horizontal Carrier |
| 15 | J15DS | Short Horizontal Carrier, 4:3, 3:2, 7:4, 2:1 & 3:1 Ratios |
| 16 | J16A | Oil Seal Plate |
| 17 | J17EW | Bottom Plug With Oil Tube |
| | E18 | Inspection Plate (Not Shown) |
| 19 | J19E | Oil Screw |
| 20 | J20 | Thrust Bearing Bushing |
| 21 | J21RB | Thrust Bearing Cover |
| 22 | | Not available on this model |
| 24 | J24R | Non Reverse Clutch |
| 241 | | Drive Pins, Set of 2 |
| 242 | NR 40 | Non Reverse Pins, Set of 4 |
| 400 | | Vertical Shaft, Standard & Light Thrust, Drive Sleeve |
| 400 | | Vertical Shaft, Standard & Light Thrust, Drive Nut |
| 450 | | Vertical Spacer |
| 451 | | Vertical Under Gear Spacer |
| 480 | 3000-393 | Retaining Ring |
| 500 | 2258 | Horizontal Shaft |
| 550 | | Horizontal Outer Spacer |
| 551 | | Horizontal Inner Spacer |
| 560 | 2230 | Locknut Set |
| 600 | 6312 | Thrust Bearing, Light Thrust |
| 600 | 7312BG | Thrust Bearing, Standard Thrust |
| 601 | 6211 | Vertical Lower Bearing |
| 602 | M802011/48 | Horizontal Outer Bearing |
| 603 | M802011/48 | Horizontal Inner Bearing |
| 700 | 2124 | Drive Nut, Obsolete |
| 700 | 2381 | Drive Sleeve, Current Design |
| 701 | | Not available on this model |
| 702 | | Not available on this model |
| 801 | 7075-2 | Oil Tube (Order with Bottom Plug) |
| 802 | 15141 | Oil Seal |
| 803 | | Main Oil Line |
| 804 | S 25 | Oil Line Manifold |
| 804 | E25W | Oil Line Manifold with Fittings |
| 807 | | Gear Oil Line |
| 808 | | Horizontal Carrier Oil Line |
| 809 | | Thrust Bearing Oil Line |
| 816 | 2255 | Cooling Coil |
| 825 | GC 40 | Complete Set of Gaskets (below S/N 231989) |
| | 51531 | Loctite Gasket Sealant 50ml tube (S/N 231989 and above) |
| 910 | MK3 | Vertical Shaft Gear Key |
| 911 | MK3 | Horizontal Shaft Gear Key |
| 912 | MK10 | Horizontal Shaft Key |
| 920 | | Not available on this model |
| | P1030-4 | Oil Sight Glass |

MINIMUM ORDER VALUE - \$100.00 NET.

SOME PART NUMBERS DETERMINED BY RATIO AND/OR OPTIONAL FEATURES.
ALWAYS PROVIDE SERIAL NUMBER OF DRIVE WHEN ORDERING PARTS FOR
VERIFICATION.

| Model 60A and 80A Parts List | | | | |
|--|------------------|------------------|-----------------|--|
| STANDARD DRIVE, TYPE S OR SL, FIGURE 1 ROTATION | | | | |
| Ref. No. | Model 60A | Model 80A | Part No. | Description |
| 10 | X | X | P10D | Gear Case |
| 11 | X | X | P11B | Cover |
| 12 | X | | P12 | Thrust Bearing Carrier |
| 12 | | X | P12AR | Thrust Bearing Carrier |
| 12 | X | | P12AR | Thrust Bearing Carrier, Light Thrust |
| 12 | | X | P12SR | Thrust Bearing Carrier, Light Thrust |
| 15 | X | | P13TA | Horizontal Carrier |
| 15 | X | | P13TS | Short Horizontal Carrier, 8:5, 2:1, & 3:1 Ratios |
| 15 | | X | P14TA | Horizontal Carrier |
| 15 | | X | P14TS | Short Horizontal Carrier, 5:2, 2:1, & 3:1 Ratios |
| 16 | X | | P16D | Oil Seal Plate |
| 16 | | X | P16TFS | Oil Seal Plate |
| 17 | X | X | P17EW | Bottom Plug With Oil Tube |
| | X | X | E18 | Inspection Plate (Not Shown) |
| 19 | X | X | P19E | Oil Screw |
| 20 | | X | | Not available on this model |
| 21 | X | | P21RDH | Thrust Bearing Cover |
| 21 | | X | P21RBH | Thrust Bearing Cover |
| 21 | X | | P21RBH | Thrust Bearing Cover, Light Thrust |
| 21 | | X | P21RDH | Thrust Bearing Cover, Light Thrust |
| 22 | X | X | E22 | Cover Plug |
| 24 | X | X | P24R-1 | Non Reverse Clutch |
| 241 | X | X | | Drive Pins, Set of 2 |
| 242 | X | X | NR60 or NR80 | Non Reverse Pins, Set of 4 |
| 400 | | X | 3765-1 | Vertical Shaft, Standard Thrust |
| 400 | X | X | | Vertical Shaft, Light Thrust |
| 450 | X | X | | Vertical Spacer |
| 451 | X | X | | Vertical Under Gear Spacer |
| 480 | X | X | 3000-433 | Retaining Ring |
| 500 | X | | 3391 | Horizontal Shaft |
| 500 | | X | 3392 | Horizontal Shaft |
| 500 | X | X | | Horizontal Shaft, 8:5, 7:4, 2:1, & 3:1 Ratios |
| 550 | X | X | | Horizontal Outer Spacer |
| 551 | X | X | | Horizontal Inner Spacer |
| 560 | X | | 2230 | Locknut Set |
| 560 | | X | 3268 | Locknut Set |
| 600 | X | | 7312 | Thrust Bearing |
| 600 | | X | 7412 | Thrust Bearing |
| 600 | X | | 6412 | Thrust Bearing, Light Thrust |
| 600 | | X | 2-7312 | Thrust Bearing, Light Thrust |
| 601 | X | X | 6212 | Vertical Lower Bearing |
| 602 | X | | HM804810/40 | Horizontal Outer Bearing |
| 602 | | X | JHM807012/45 | Horizontal Outer Bearing |
| 603 | X | | HM804810/48 | Horizontal Inner Bearing |
| 603 | | X | HM807010/46 | Horizontal Inner Bearing |
| 700 | X | X | 3841 | Drive Sleeve |
| 701 | X | X | MK5 | Drive Sleeve Key |
| 702 | X | X | N-11 | Drive Sleeve Locknut |
| 801 | X | X | 7075-3 | Oil Tube (Order with Bottom Plug) |
| 802 | X | | 15141 | Oil Seal |
| 802 | | X | 18733 | Oil Seal |
| 803 | X | X | | Main Oil Line |
| 804 | X | X | S 25 | Oil Line Manifold |
| 804 | X | X | E25W | Oil Line Manifold with Fittings |
| 807 | X | X | | Gear Oil Line |
| 808 | X | X | | Horizontal Carrier Oil Line |
| 809 | X | X | | Thrust Bearing Oil Line |
| 816 | X | X | 3353 | Cooling Coil |
| 825 | X | X | GC 60 or GC 80 | Complete Set of Gaskets (below S/N 231989) |
| | X | X | 51531 | Loctite Gasket Sealant 50ml tube (S/N 231989 and up) |
| 910 | X | X | MK5 | Vertical Shaft Gear Key |
| 911 | X | X | MK5 | Horizontal Shaft Gear Key |
| 912 | X | X | MK10 | Horizontal Shaft Key |
| 920 | | | | Not available on this model |
| | X | X | 401100 | CR v seal for S60A thru S125A |

MINIMUM ORDER VALUE - \$100.00 NET.

SOME PART NUMBERS DETERMINED BY RATIO AND/OR OPTIONAL FEATURES. ALWAYS PROVIDE SERIAL NUMBER OF DRIVE WHEN ORDERING PARTS FOR VERIFICATION.



| Model 100A and 125A Parts List | | | | |
|--|-------------------|-------------------|-------------------|---|
| STANDARD DRIVE, TYPE S OR SL, FIGURE 1 ROTATION | | | | |
| Ref. No. | Model 100A | Model 125A | Part No. | Description |
| 10 | X | X | P10D | Gear Case |
| 11 | X | X | P11B | Cover |
| 12 | X | | P12AR | Thrust Bearing Carrier |
| 12 | | X | P12SR | Thrust Bearing Carrier |
| 12 | X | X | P12SR | Thrust Bearing Carrier, Light Thrust |
| 15 | X | | P14TA | Horizontal Carrier |
| 15 | X | | P14TS | Short Horizontal Carrier, 5:2, 2:1, & 3:1 Ratios |
| 15 | | X | P15TA | Horizontal Carrier |
| 16 | X | X | P16TFS | Oil Seal Plate |
| 17 | X | X | P17EW | Bottom Plug With Oil Tube |
| | X | X | E18 | Inspection Plate (Not Shown) |
| 19 | X | X | P19E | Oil Screw |
| 20 | | | | Not available on this model |
| 21 | X | | P21RBH | Thrust Bearing Cover |
| 21 | | X | P21RDH | Thrust Bearing Cover |
| 21 | X | X | P21RDH | Thrust Bearing Cover, Light Thrust |
| 22 | X | X | E22 | Cover Plug |
| 24 | X | X | P24R-1 | Non Reverse Clutch |
| 241 | X | X | | Drive Pins, Set of 2 |
| 242 | X | X | NR 100 | Non Reverse Pins, Set of 4 |
| 400 | X | | 3765-1 | Vertical Shaft, Standard Thrust |
| 400 | | X | 3765-4 | Vertical Shaft, Standard Thrust |
| 400 | X | X | 3765-4 | Vertical Shaft, Light Thrust |
| 450 | X | X | | Vertical Spacer |
| 451 | X | X | | Vertical Under Gear Spacer |
| 480 | X | X | 3000-433 | Retaining Ring |
| 500 | X | | 3392 | Horizontal Shaft |
| 500 | | X | 3267 | Horizontal Shaft |
| 500 | X | | | Horizontal Shaft, 5:2, 2:1, & 3:1 Ratios |
| 550 | X | X | | Horizontal Outer Spacer |
| 551 | X | X | | Horizontal Inner Spacer |
| 560 | X | X | 3268 | Locknut Set |
| 600 | X | | 7412BG | Thrust Bearing |
| 600 | | X | 2-7312 | Thrust Bearing |
| 600 | X | X | 2-7312 | Thrust Bearing, Light Thrust |
| 601 | X | X | 6212 | Vertical Lower Bearing |
| 602 | X | | JHM807012/45 | Horizontal Outer Bearing |
| 602 | | X | HM807010/46 | Horizontal Outer Bearing |
| 603 | X | | HM807010/46 | Horizontal Inner Bearing |
| 603 | | X | 5535/5566 | Horizontal Inner Bearing |
| 700 | X | X | 3841 | Drive Sleeve |
| 701 | X | X | MK5 | Drive Sleeve Key |
| 702 | X | X | N-11 | Drive Sleeve Locknut |
| 801 | X | X | 7075-3 | Oil Tube (Order with Bottom Plug) |
| 802 | X | X | 18733 | Oil Seal |
| 803 | X | X | | Main Oil Line |
| 804 | X | X | S 25 | Oil Line Manifold |
| 804 | X | X | E25W | Oil Line Manifold with Fittings |
| 807 | X | X | | Gear Oil Line |
| 808 | X | X | | Horizontal Carrier Oil Line |
| 809 | X | X | | Thrust Bearing Oil Line |
| 816 | X | X | 3353 | Cooling Coil |
| 825 | X | X | GC 100 or GC 125A | Complete Set of Gaskets (below S/N 231989) |
| | X | X | 51531 | Loctite Gasket Sealant 50ml tube (S/N 231989 & above) |
| 910 | X | X | MK5 | Vertical Shaft Gear Key |
| 911 | X | X | MK5 | Horizontal Shaft Gear Key |
| 912 | X | X | MK10 | Horizontal Shaft Key |
| 920 | | | | Not available on this model |
| | X | X | 401100 | CR v seal for S60A thru S125A |
| | X | X | P1030-4 | Oil Sight Glass |

MINIMUM ORDER VALUE - \$100.00 NET.

SOME PART NUMBERS DETERMINED BY RATIO AND/OR OPTIONAL FEATURES. ALWAYS PROVIDE SERIAL NUMBER OF DRIVE WHEN ORDERING PARTS FOR VERIFICATION.



| Model 150A Parts List | | |
|--|-----------------|---|
| STANDARD DRIVE, TYPE S OR SL, FIGURE 1 ROTATION | | |
| Ref. No. | Part No. | Description |
| 10 | P10M | Gear Case |
| 11 | P11B | Cover |
| 12 | P12S2M | Thrust Bearing Carrier, Standard or Light Thrust |
| 15 | P15M | Horizontal Carrier |
| 15 | P15MS | Short Horizontal Carrier, 7:4, 2:1 & 5:2 Ratios |
| 16 | M16B | Oil Seal Plate |
| 17 | P17MW | Bottom Plug With Oil Tube |
| | E18 | Inspection Plate (Not Shown) |
| 19 | P19M | Oil Screw |
| 20 | | Not available on this model |
| 21 | P21RMH | Thrust Bearing Cover, Standard or Light Thrust |
| 22 | E22 | Cover Plug |
| 24 | P24RM | Non Reverse Clutch |
| 241 | | Drive Pins, Set of 2 |
| 242 | NR125 | Non Reverse Pins, Set of 4 |
| 400 | 3465-3 | Vertical Shaft, Standard or Light Thrust |
| 450 | | Vertical Spacer |
| 451 | | Vertical Under Gear Spacer |
| 480 | 3000-500 | Retaining Ring |
| 500 | 3464 | Horizontal Shaft |
| 500 | | Horizontal Shaft, 7:4, 2:1, 5:2, & 3:2 Ratios |
| 550 | | Horizontal Outer Spacer |
| 551 | | Horizontal Inner Spacer |
| 560 | 5237 | Locknut Set |
| 600 | 2-7315BG | Thrust Bearing, Standard or Light Thrust |
| 601 | 6215 | Vertical Lower Bearing |
| 602 | JH211710/49 | Horizontal Outer Bearing |
| 603 | JH211710/49 | Horizontal Inner Bearing |
| 700 | P700M | Drive Sleeve |
| 701 | MK5 | Drive Sleeve Key |
| 702 | N-14 | Drive Sleeve Locknut |
| 801 | 7075-7 | Oil Tube (Order with Bottom Plug) |
| 802 | 24370 | Oil Seal |
| 803 | | Main Oil Line |
| 804 | S 25 | Oil Line Manifold |
| 804 | E25W | Oil Line Manifold with Fittings |
| 807 | | Gear Oil Line |
| 808 | | Horizontal Carrier Oil Line |
| 809 | | Thrust Bearing Oil Line |
| 816 | 3353 | Cooling Coil |
| 825 | GC 150A | Complete Set of Gaskets (S/N below S/N 231989) |
| | 51531 | Loctite Gasket Sealant 50ml tube (S/N 231989 & above) |
| 910 | MK6 | Vertical Shaft Gear Key |
| 911 | MK6 | Horizontal Shaft Gear Key |
| 912 | MK15 | Horizontal Shaft Key |
| 920 | | Not available on this model |
| | P1030-4 | Oil Sight Glass |

*MINIMUM ORDER VALUE - \$100.00 NET.
SOME PART NUMBERS DETERMINED BY RATIO AND/OR OPTIONAL FEATURES.
ALWAYS PROVIDE SERIAL NUMBER OF DRIVE WHEN ORDERING PARTS FOR
VERIFICATION.*



| Model 200A Parts List | | |
|--|-----------------|--|
| STANDARD DRIVE, TYPE S OR SL, FIGURE 1 ROTATION | | |
| Ref. No. | Part No. | Description |
| 10 | M10F | Gear Case |
| 11 | M11B | Cover |
| 12 | M12 | Thrust Bearing Carrier, Standard or Light Thrust |
| 15 | M13TF | Horizontal Carrier, Speed Increasing, 1:1 & 11:10 Ratios |
| 15 | M13STF | Horizontal Carrier, Speed Decreasing, Except 11:10 Ratio |
| 16 | M16B | Oil Seal Plate |
| 17 | M17BW | Bottom Plug With Oil Tube |
| | E18 | Inspection Plate (Not Shown) |
| 19 | M19B | Oil Screw |
| 20 | | Not available on this model |
| 21 | M21RDH | Thrust Bearing Cover, Standard or Light Thrust |
| 22 | E22 | Cover Plug |
| 24 | M24R-1 | Non Reverse Clutch |
| 241 | | Drive Pins, Set of 2 |
| 242 | NR 200 | Non Reverse Pins, Set of 4 |
| 400 | 5853 | Vertical Shaft, Standard or Light Thrust |
| 450 | | Vertical Spacer |
| 451 | | Vertical Under Gear Spacer |
| 480 | 3000-550 | Retaining Ring |
| 500 | 5262 | Horizontal Shaft, Increasing, 1:1, & 11:10 Ratios |
| 500 | 5261 | Horizontal Shaft, Decreasing |
| 500 | 5383 | Horizontal Shaft, 8:5 Ratio |
| 500 | 5813 | Horizontal Shaft, 7:4 Ratio |
| 500 | 5345 | Horizontal Shaft, 5:2 Ratio |
| 500 | 5265 | Horizontal Shaft, 2:1 Ratio |
| 500 | 5339 | Horizontal Shaft, 3:1 Ratio |
| 550 | | Horizontal Outer Spacer |
| 551 | | Horizontal Inner Spacer |
| 560 | 5237 | Locknut Set |
| 600 | 2-7315BG | Thrust Bearing, Standard or Light Thrust |
| 601 | 6216 | Vertical Lower Bearing |
| 602 | 632/642 | Horizontal Outer Bearing |
| 603 | H414210/49 | Horizontal Inner Bearing |
| 700 | 5411 | Drive Sleeve |
| 701 | MK6 | Drive Sleeve Key |
| 702 | AN-15 | Drive Sleeve Locknut |
| 801 | 7075-4 | Oil Tube (Order with Bottom Plug) |
| 802 | 24370 | Oil Seal |
| 803 | | Main Oil Line |
| 804 | S 25 | Oil Line Manifold |
| 804 | E25W | Oil Line Manifold with Fittings |
| 807 | | Gear Oil Line |
| 808 | | Horizontal Carrier Oil Line |
| 809 | | Thrust Bearing Oil Line |
| 816 | 5377 | Cooling Coil |
| 825 | GC 200 | Complete set of Gaskets (below S/N 231989) |
| | 51531 | Loctite Gasket Sealant 50ml tube (S/N 231989 & above) |
| 910 | MK6 | Vertical Shaft Gear Key |
| 911 | MK6 | Horizontal Shaft Gear Key |
| 912 | MK15 | Horizontal Shaft Key |
| 920 | | Not available on this model |
| | P1030-4 | Oil Sight Glass |

*MINIMUM ORDER VALUE - \$100.00 NET.
SOME PART NUMBERS DETERMINED BY RATIO AND/OR OPTIONAL FEATURES.
ALWAYS PROVIDE SERIAL NUMBER OF DRIVE WHEN ORDERING PARTS FOR
VERIFICATION.*



Post Office Box 1789
 Amarillo, Texas 79105
 2401 Sundown Lane (79118)
 Ph. 806 622 1273
 Fax 806 622 3258

| Model 250, 300, & 350 Parts List | | | | |
|---|-----------|-----------------|---------------|--|
| STANDARD DRIVE, TYPE S, FIGURE 1 ROTATION | | | | |
| Ref. No. | Model 250 | Model 300 & 350 | Part No. | Description |
| 10 | X | X | M10F | Gear Case |
| 11 | X | X | M11B | Cover |
| 12 | X | X | M12T | Thrust Bearing Carrier |
| 15 | X | X | M15T | Horizontal Carrier, Speed Increasing, Except 10:11 and 4:5 |
| 15 | X | X | M15TS | Horizontal Carrier, Speed Decreasing, 1:1, 10:11, & 4:5 |
| 16 | X | X | L16A | Oil Seal Plate |
| 17 | X | X | M17TW | Bottom Plug With Oil Tube |
| | X | X | E18 | Inspection Plate (Not Shown) |
| 19 | X | X | M19T | Oil Screw |
| 20 | | | | Not available on this model |
| 21 | X | X | M21T | Thrust Bearing Cover |
| 22 | X | X | E22 | Cover Plug |
| 24 | X | X | M24R-1 | Non Reverse Clutch |
| 241 | X | X | | Drive Pins, Set of 2 |
| 242 | X | X | NR 250 | Non Reverse Pins, Set of 4 |
| 400 | X | X | 5590 | Vertical Shaft, Increasing, 1:1, & 11:10 Ratios |
| 400 | X | X | 5627 | Vertical Shaft, Decreasing Ratios |
| 450 | X | X | | Vertical Spacer |
| 451 | X | X | | Vertical Under Gear Spacer |
| 480 | X | X | M40T | Cup Adjustment Plate |
| 500 | X | X | 5594 | Horizontal Shaft, 1:1, 10:11 & 11:10 Ratios |
| 500 | X | X | 5598 | Horizontal Shaft, 6:5, 4:3, 3:2, & 5:4 Ratios |
| 500 | X | X | 5612 | Horizontal Shaft, 2:1 Ratio |
| 500 | X | X | 5667 | Horizontal Shaft, 3:1 Ratio |
| 500 | X | X | 5636 | Horizontal Shaft, 5:2 Ratio |
| 500 | X | X | 5741 | Horizontal Shaft, 7:4 Ratio |
| 500 | X | X | 5599 | Horizontal Shaft, 4:7, 2:3, & 3:4 Ratios |
| 550 | X | X | | Horizontal Outer Spacer |
| 551 | X | X | | Horizontal Inner Spacer |
| 560 | X | X | 6217 | Locknut Set |
| 561 | X | X | AN17/W17 | Horizontal Gear Retainer |
| 600 | X | X | HM926710/40 | Thrust Bearing |
| 601 | X | X | JHM516810/49 | Vertical Lower Bearing |
| 602 | X | X | 742/749 | Horizontal Outer Bearing |
| 603 | X | X | 6535/6580 | Horizontal Inner Bearing |
| 700 | X | X | 5585 | Drive Sleeve |
| 701 | X | X | MK14 | Drive Sleeve Key |
| 702 | X | X | AN16 | Drive Sleeve Locknut |
| 801 | X | X | 7075-12 | Oil Tube (Order with Bottom Plug) |
| 802 | X | X | 29384 | Oil Seal |
| 803 | X | X | | Main Oil Line |
| 804 | X | X | S 25 | Oil Line Manifold |
| 804 | X | X | E25W | Oil Line Manifold with Fittings |
| 807 | X | X | | Gear Oil Line |
| 808 | X | X | | Horizontal Carrier Oil Line |
| 809 | X | X | | Thrust Bearing Oil Line |
| 816 | X | | 5377 | Cooling Coil |
| 816 | | X | FP5X12-14/AMA | Heat Exchanger |
| 825 | X | X | GC 250 | Complete Set of Gaskets (below S/N 231989) |
| | X | X | 51531 | Loctite Gasket Sealant 50ml tube (S/N 231989 & above) |
| 910 | X | X | MK12 | Vertical Shaft Gear Key |
| 911 | X | X | MK20 | Horizontal Shaft Gear Key |
| 912 | X | X | MK16 | Horizontal Shaft Key |
| 920 | X | X | AN16 | Oil Screw Locknut |
| | X | X | P1030-4 | Oil Sight Glass |
| | X | X | SM 300 | Shims |

MINIMUM ORDER VALUE - \$100.00 NET.

SOME PART NUMBERS DETERMINED BY RATIO AND/OR OPTIONAL FEATURES. ALWAYS PROVIDE SERIAL NUMBER OF DRIVE WHEN ORDERING PARTS FOR VERIFICATION.



Combination Parts List

| Ref No. | Description | 20 & 30 | 40 | 60A | 80A, 100A, & 125A |
|---------|------------------------|----------|----------|----------|-------------------|
| | | Part No. | Part No. | Part No. | Part No. |
| 12 | Thrust Bearing Carrier | S12S | J12S | P12SRC | P12S2 |
| 20 | Thrust Bearing Bushing | Not Used | J20S | Not Used | Not Used |
| 21 | Thrust Bearing Cover | S1121R | J2321 | P21N | P21N |
| 400 | Vertical Shaft | | | | |
| 600 | Thrust Bearings | 2-7407BG | 2-7312BG | 2-7312BG | 2-7412BG |
| 702 | Drive Sleeve Locknut | N-07 | 2243 | N-11 | N-11 |
| 724 | Sliding Clutch | 1183 | 2248 | 3293 | 3293 |
| 736 | Non-Reverse Pins, Set | NR C20 | NR C40 | NR C60 | NR C80 |
| 756 | Drive Sleeve | 1212 | 2241 | 3290 | 3290 |
| 757 | Drive Sleeve Cover | 1213 | 2242 | 3291 | 3291 |
| 758 | Bearing Bushing | 1214 | 2244 | 3294 | 3294 |
| 769 | Retaining Ring, Outer | 3000-281 | 3000-334 | 3000-393 | 3000-393 |
| 770 | Retaining Ring, Inner | 3100-137 | 3100-177 | 3100-215 | 3100-215 |
| 792 | Gib Key | | | | |
| 6200Z | Steady Bearing | 6207-2RS | 6209-2RS | 6211-2RS | 6211-2RS |

| Ref No. | Description | 150A | 200A | 250, 300, & 350 |
|---------|------------------------|----------|----------|-----------------|
| | | Part No. | Part No. | Part No. |
| 12 | Thrust Bearing Carrier | P12C | M12SB | |
| 20 | Thrust Bearing Bushing | Not Used | Not Used | 5643 |
| 21 | Thrust Bearing Cover | P21NC | M21C | M21TC |
| 400 | Vertical Shaft | | | |
| 600 | Thrust Bearings | 2-7315BG | 2-7415BG | |
| 702 | Drive Sleeve Locknut | N-14 | AN-15 | AN-16 |
| 724 | Sliding Clutch | 3468 | 5274 | 5647 |
| 736 | Non-Reverse Pins, Set | NR C150A | NR C200 | NR C250 |
| 756 | Drive Sleeve | 3689 | 5271 | 5644 |
| 757 | Drive Sleeve Cover | 3690 | 5272 | 5645 |
| 758 | Bearing Bushing | 3469 | 5273 | 5646 |
| 769 | Retaining Ring, Outer | 3000-433 | 3000-475 | 3000-500 |
| 770 | Retaining Ring, Inner | 3100-237 | 3100-275 | 5100-293 |
| 792 | Gib Key | | | |
| 6200Z | Steady Bearing | 6212-2RS | 6214-2RS | 6215-2RS |

MINIMUM ORDER VALUE - \$100.00 NET.

SOME PART NUMBERS DETERMINED BY RATIO AND/OR OPTIONAL FEATURES. ALWAYS PROVIDE SERIAL NUMBER OF DRIVE WHEN ORDERING PARTS FOR VERIFICATION.